

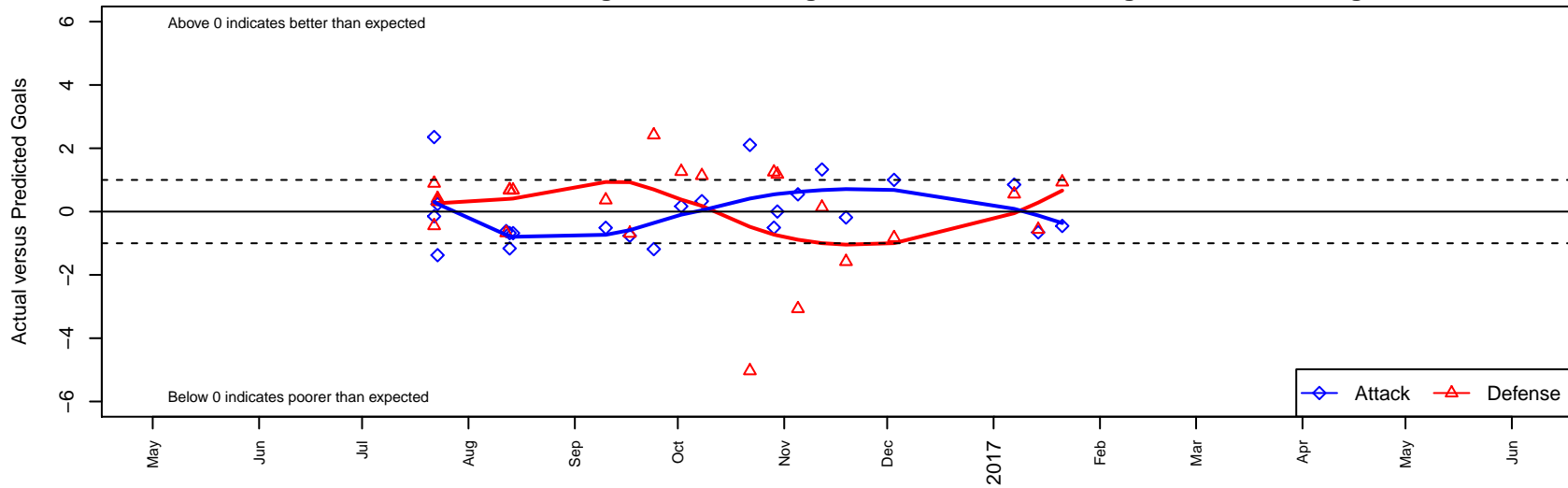
Bellevue United Select B06

Bellevue, WA
 B06 total strength=364
 attack=0.2 defense=0.24
 fall league = NPSL Div 2 (06) U11
 notes= Harkenrider 2016

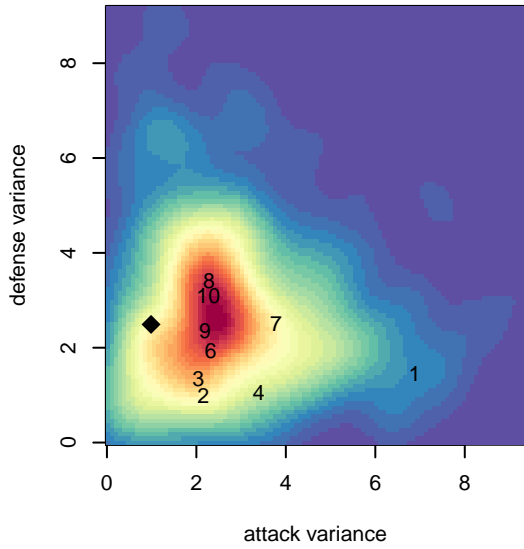
alt names used:
 BUFC B06 Harkenrider
 BUFC BU11 Harkenrider
 BUFC Select B06 Harkenrider
 Bellevue United FC Harkenrider B06 – BU11

Venues played:
 2016 Crossfire Select U11 Bronze
 2016 Blast Off B2006 C
 2016 NPSL Division 2 (06) U11
 2016 Founders Cup B06 Div A

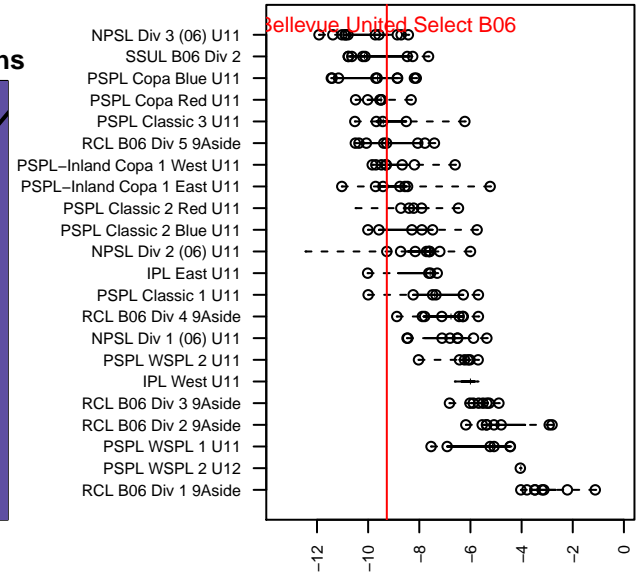
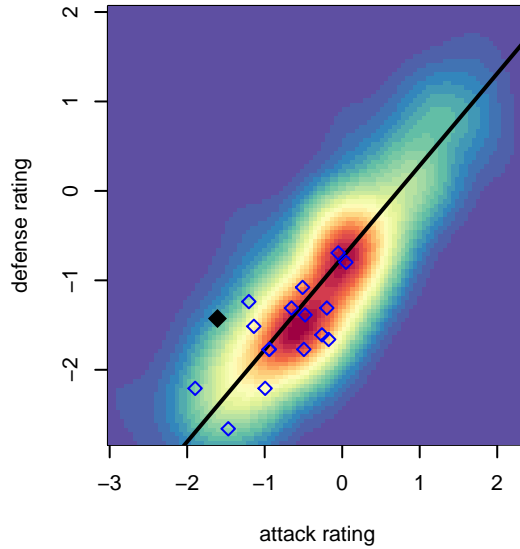
Bellevue United Select B06
 Dots are actual minus expected GF (blue circles) and GA (red triangles).
 Blue line is smoothed change in attack strength. Red is smoothed change in defense strength.



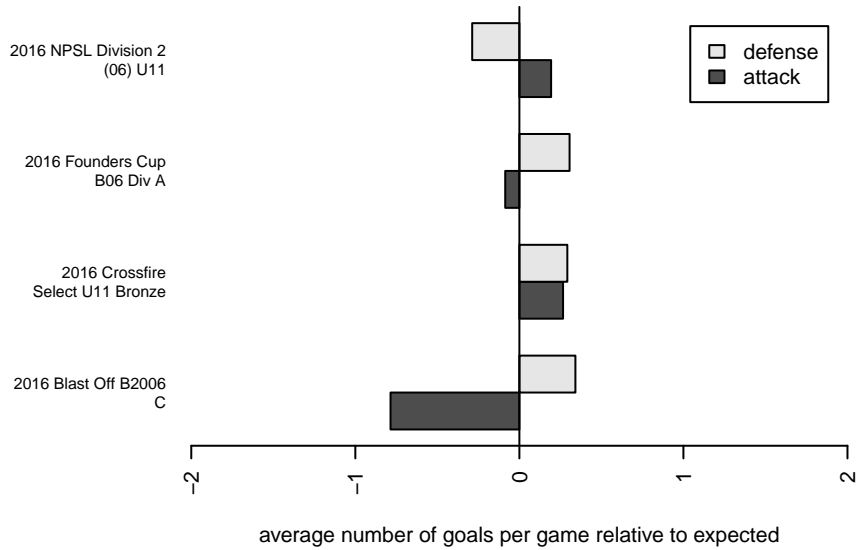
**attack and defense variance (black dot)
relative to other teams
and top 10 in region**



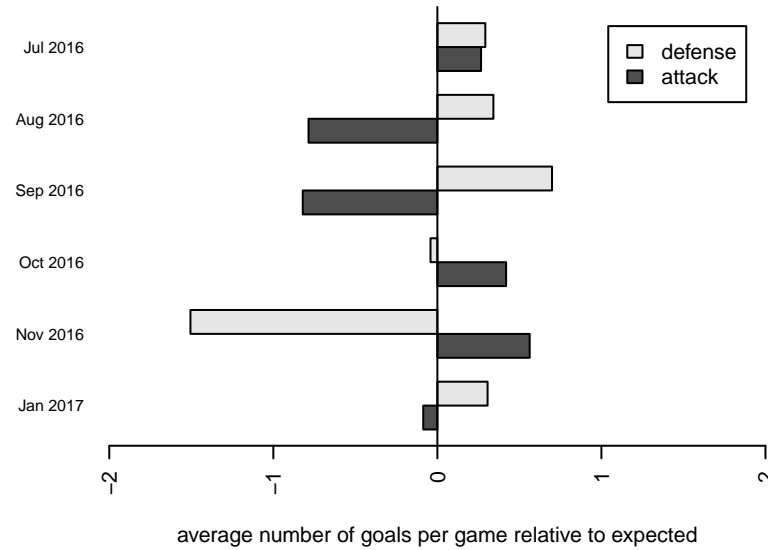
**attack and defense rating
relative to others at age
and all opponents in last 13 months**



Performance relative to 13 month average



Performance relative to 13 month average



date	home		away		venue	pred.home	pred.away
2017-01-21	BIFC Blue B06	3	Bellevue United Select B06	0	2016 Founders Cup B06 Div A	3.93	0.45
2017-01-14	Bellevue United Select B06	0	Crossfire Select Bakirci B06	4	2016 Founders Cup B06 Div A	0.66	3.44
2017-01-07	Seattle United W Black B06	1	Bellevue United Select B06	2	2016 Founders Cup B06 Div A	1.55	1.15
2016-12-03	Bellevue United Select B06	2	Lake Hills Hurricanes B06	4	2016 NPSL Division 2 (06) U11	1.00	3.18
2016-11-19	Mercer Island FC Sounders B06	4	Bellevue United Select B06	1	2016 NPSL Division 2 (06) U11	2.42	1.19
2016-11-12	Bellevue United Select B06	2	NSC Kingsmen White B06	2	2016 NPSL Division 2 (06) U11	0.67	2.13
2016-11-05	BIFC Blue B06	7	Bellevue United Select B06	1	2016 NPSL Division 2 (06) U11	3.93	0.45
2016-10-30	Bellevue United Select B06	1	Lake Hills Hurricanes B06	2	2016 NPSL Division 2 (06) U11	1.00	3.18
2016-10-29	FME Xtreme B06	3	Bellevue United Select B06	0	2016 NPSL Division 2 (06) U11	4.25	0.51
2016-10-22	Bellevue United Select B06	3	Seattle United S White B06	8	2016 NPSL Division 2 (06) U11	0.90	2.97
2016-10-08	NSC Kingsmen White B06	1	Bellevue United Select B06	1	2016 NPSL Division 2 (06) U11	2.13	0.67
2016-10-02	Bellevue United Select B06	1	Storm King B06	0	2016 NPSL Division 2 (06) U11	0.83	1.26
2016-09-24	Bellevue United Select B06	0	Mercer Island FC Sounders B06	0	2016 NPSL Division 2 (06) U11	1.19	2.42
2016-09-17	NSC Skilz White B06	3	Bellevue United Select B06	0	2016 NPSL Division 2 (06) U11	2.31	0.76
2016-09-10	Seattle United W White B06	2	Bellevue United Select B06	0	2016 NPSL Division 2 (06) U11	2.37	0.51
2016-08-14	Bellevue United Select B06	1	FWFC Select B06	0	2016 Blast Off B2006 C	1.68	0.68
2016-08-13	Bellevue United Select B06	1	FWFC Select B06	0	2016 Blast Off B2006 C	1.68	0.68
2016-08-13	FWFC Blue Dragons B06	1	Bellevue United Select B06	0	2016 Blast Off B2006 C	1.69	1.16
2016-08-12	Highline SA B06	2	Bellevue United Select B06	0	2016 Blast Off B2006 C	1.33	0.62
2016-07-23	Bellevue United Select B06	0	Seattle Celtic Black B06	1	2016 Crossfire Select U11 Bronze	1.38	1.41
2016-07-23	NSC Skilz White B06	2	Bellevue United Select B06	1	2016 Crossfire Select U11 Bronze	2.31	0.76
2016-07-22	NSC Knights Black B06	0	Bellevue United Select B06	5	2016 Crossfire Select U11 Bronze	0.89	2.65
2016-07-22	Bellevue United Select B06	1	Seattle United W Black B06	2	2016 Crossfire Select U11 Bronze	1.15	1.55